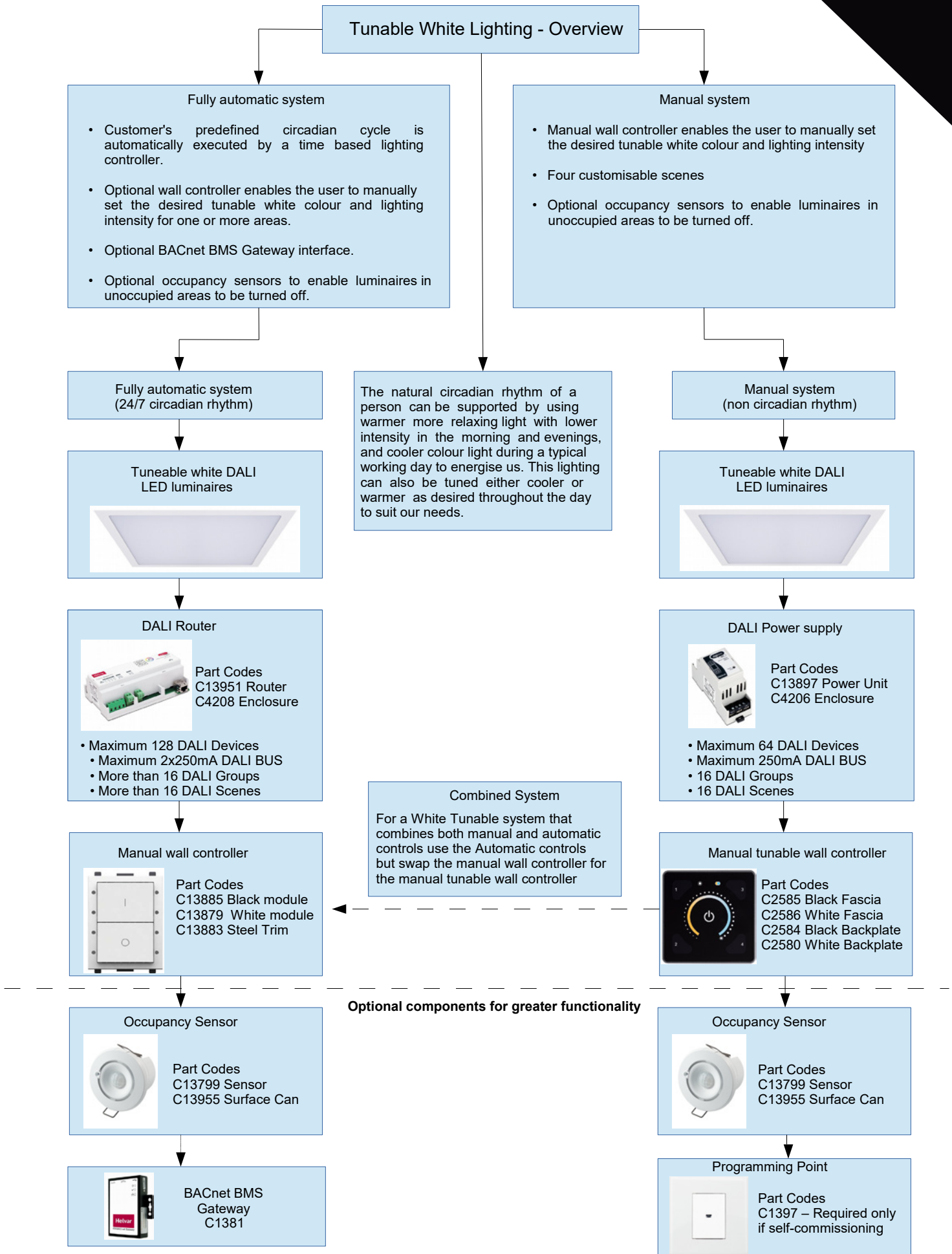
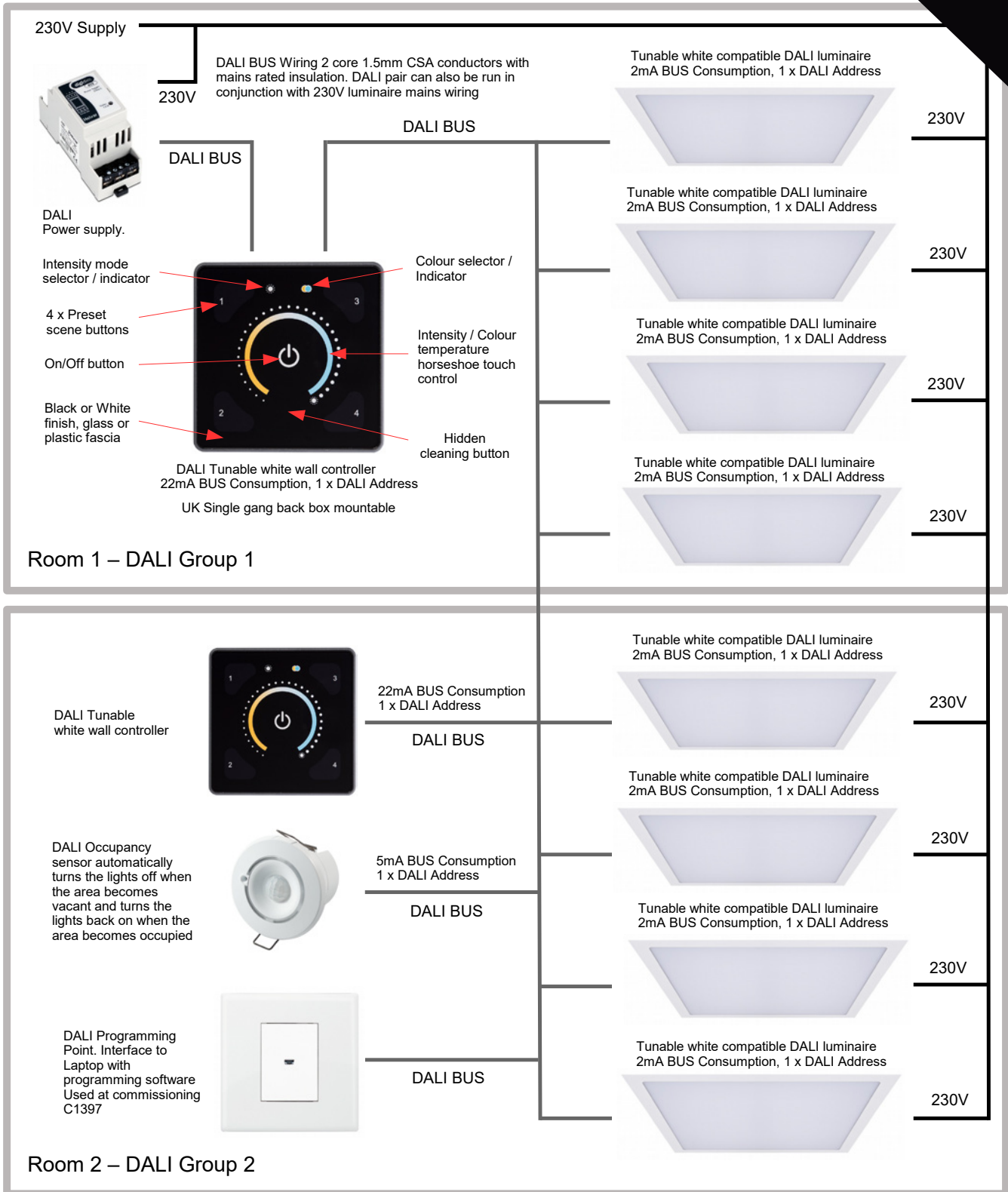




TUNABLE
WHITE LIGHTING -
CIRCADIAN RHYTHM





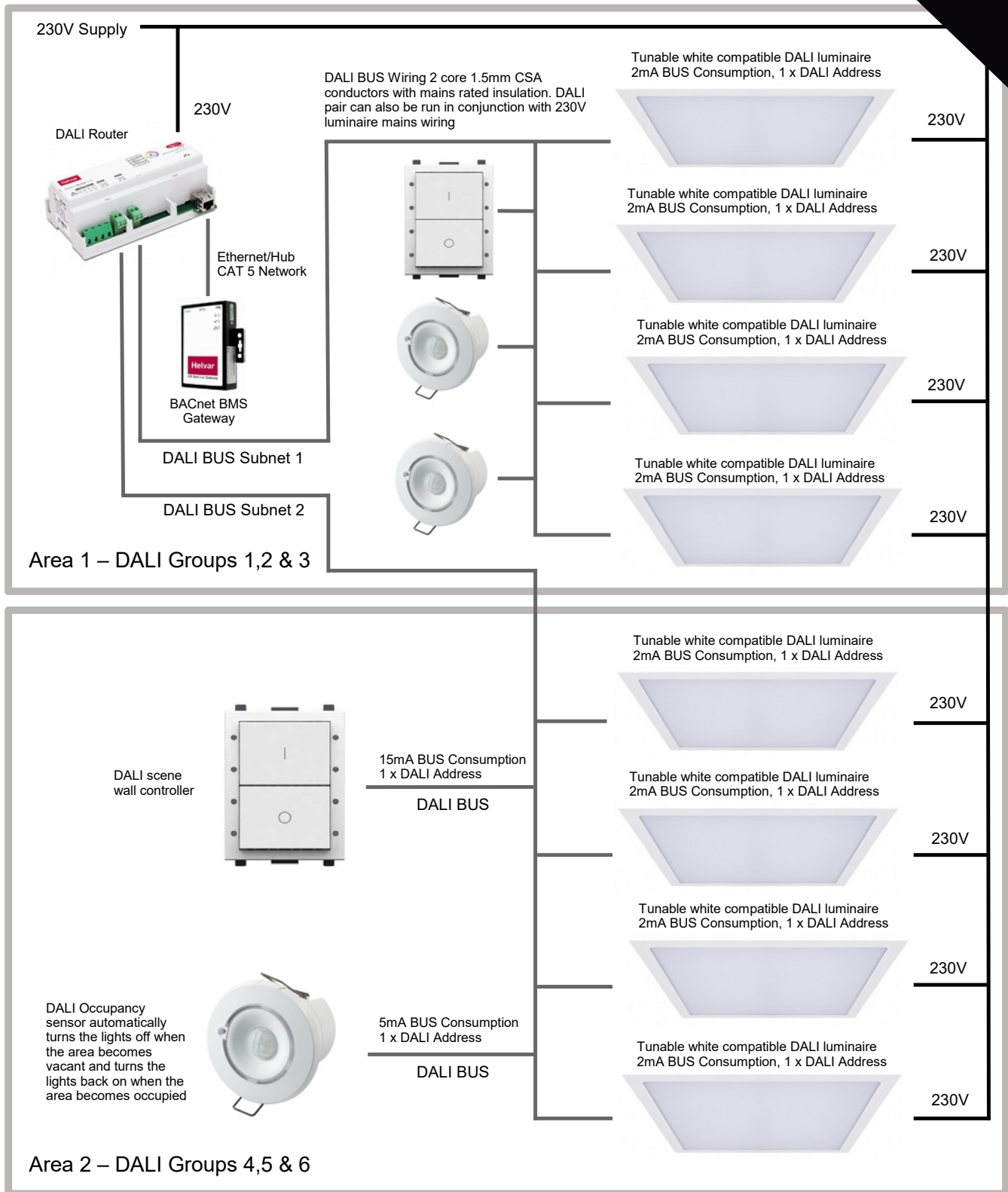
Technical:

The number of luminaires and DALI Devices which can be connected together is limited by either the maximum number of available DALI addresses or available DALI BUS power supply:

- Maximum 64 DALI devices
- Maximum 250mA DALI BUS Power supply. Maximum 300m DALI wiring pair when using 1.5mm CSA conductors
- 16 DALI groups
- 16 DALI scenes
- DALI 402 BUS Power requires a 230V, 50Hz AC supply and outputs the DALI BUS voltage, also requires a DIN Rail 2 module wide enclosure (AK05)

All DALI and CAT5 cabling is not supplied by DEXTRA.

The information supplied here is generic guidance only, some system proposals may differ. Information correct as of 10/05/2019



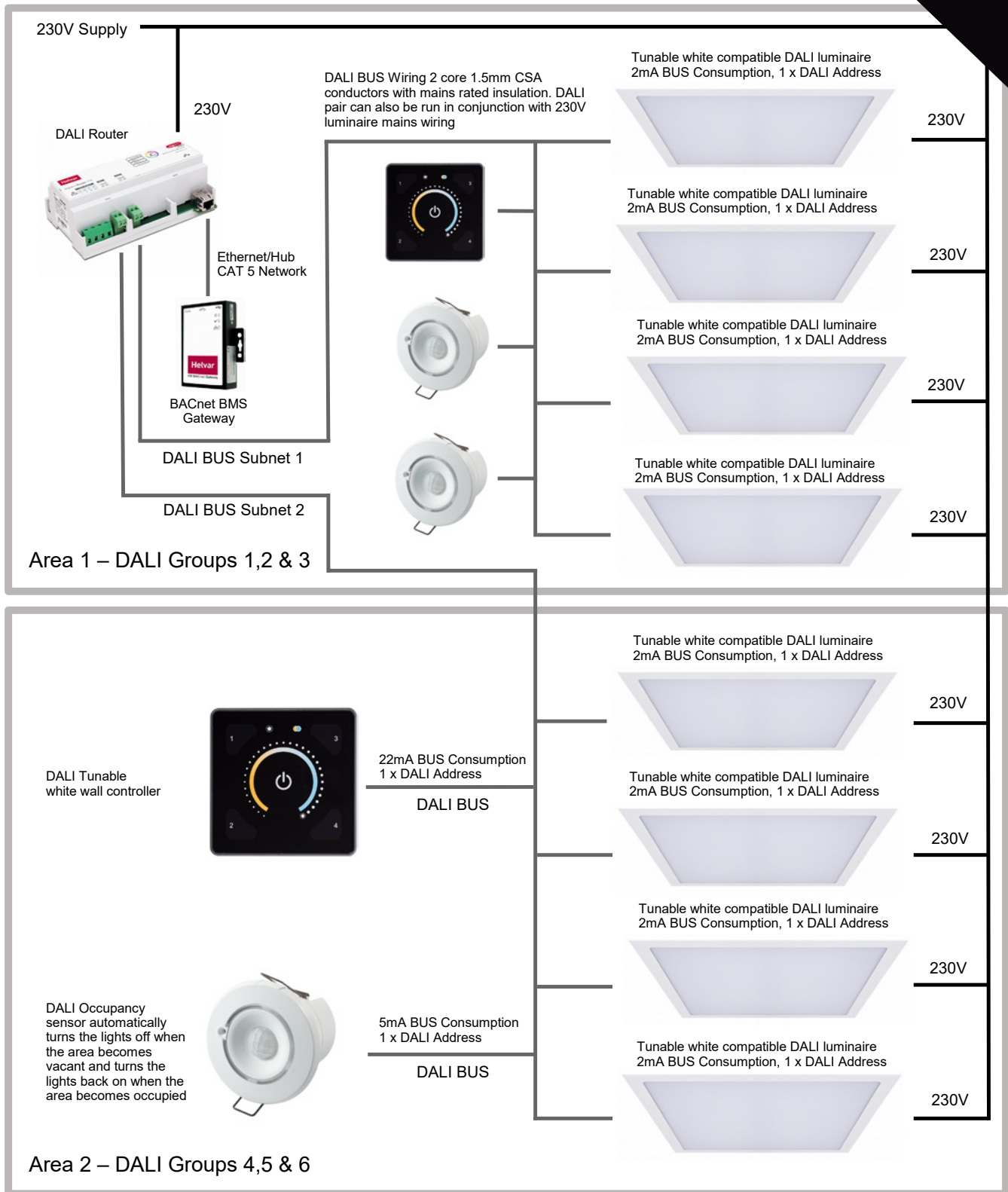
Technical:

The number of luminaires and DALI Devices which can be connected together is limited by either the maximum number of available DALI addresses or available DALI subnet BUS power supplies:

- Maximum 128 DALI devices
- Maximum 2x250mA DALI BUS Power supply. Maximum 300m DALI wiring pair per subnet when using 1.5mm CSA conductors
- Ethernet interface
- More than 16 DALI groups
- More than 16 DALI scenes
- DALI Router requires a 230V, 50Hz AC supply and outputs the DALI BUS voltages, also requires a DIN Rail 12 module wide enclosure (AK12)

All DALI and CAT5 cabling is not supplied by DEXTRA.

The information supplied here is generic guidance only, some system proposals may differ. Information correct as of 10/05/2019



Technical:

The number of luminaires and DALI Devices which can be connected together is limited by either the maximum number of available DALI addresses or available DALI subnet BUS power supplies:

- Maximum 128 DALI devices
- Maximum 2x250mA DALI BUS Power supply. Maximum 300m DALI wiring pair per subnet when using 1.5mm CSA conductors
- Ethernet interface
- More than 16 DALI groups
- More than 16 DALI scenes
- DALI Router requires a 230V, 50Hz AC supply and outputs the DALI BUS voltages, also requires a DIN Rail 12 module wide enclosure (AK12)

All DALI and CAT5 cabling is not supplied by DEXTRA.

The information supplied here is generic guidance only, some system proposals may differ. Information correct as of 10/05/2019