



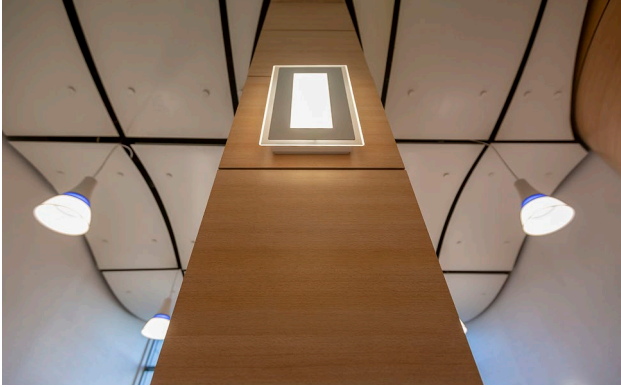
THE SYCAMORES

Newcastle

Dextra
LIGHTING

ABOUT THE CLIENT

The Sycamores is a social housing block owned and managed by Newcastle City Council under the Your Homes Newcastle brand, part of a large portfolio of housing stock that needs regular refurbishment and upgrades. The Sycamores is one of 30 tower blocks to be refurbished over the coming years. To ensure efficiency and energy savings were maximised and compliance to the latest standards, all luminaires in the communal areas i.e corridors and stairwells were upgraded.



THE SOLUTION

Used for style and performance, along with providing good value for money, Dextra's Amenity Plus Metal Circular was chosen for the corridors in the building, where 115 were installed with R25C sensors.

The Amenity Plus Metal Circular is manufactured with a high pressure die cast aluminium housing for improved strength and durability. Energy savings can be further enhanced with a selection of integral presence detection and bright out microwave sensors including on / off, bi level dimming and wireless variants allowing luminaires to be grouped for simultaneous operation. It is available in lumen outputs ranging from 1500 to 3000 and is manufactured with a high pressure die cast aluminium housing with an injection moulded polycarbonate diffuser for improved strength and durability and can be offered with a range of dimming types, integral lithium emergency and black or white housings.

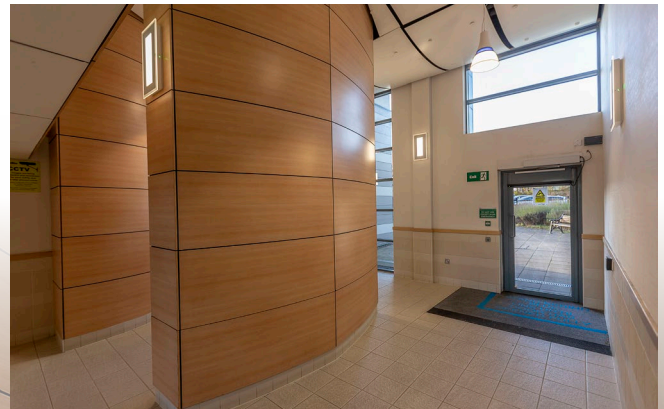
The Amenity Plus range includes premium mid power LEDs offering excellent efficiency and longevity with a lifetime of L90 at 60,000 operating hours.

In the entrance lobby, 10 Volito's were fitted to enhance the style and improve the performance of lighting in the area. Dextra's Volito combines efficiency and flexibility with a striking aesthetic, the Volito offers the ideal solution to those wishing

to create drama and impact in any space. With a milled clear surround with bevelled edge the Volito produces a halo effect which contrasts against the grey housing and high transmission central opal diffuser to produce concentric contrasting rings with differing visual effects.

The Volito has been designed to ensure that visual effect does not compromise performance, efficiency and flexibility. With a range of lumen outputs, lithium emergency and dimming options, as well as control solutions including wireless connectivity, the Volito can be specified in various combinations to suit the requirements of the installation and to integrate with all common controls systems.

Also fitted in the entrance lobby were eight Capo LED's which were fitted with a blue collar. The Capo LED combines efficiency and performance in an architectural lighting solution in suspended applications for both ambient and accent lighting. With anodised spun rear housing, translucent collar available in a range of colours and opal refractor the Capo provides a decorative and attractive installation that can also be tailored to suit any corporate theme.



THE SOLUTION

With two lumen packages and both dimming and lithium emergency options the performance of the Capo can easily be customised to your needs. In all options the control gear is housed within the same luminaire design with no need for remote packs or ceiling housings ensuring that the look and feel of the space is not compromised.

In the building's stairwells, 120 Amenity Plus Metal Square luminaires were installed with R25C sensors. The Amenity Plus Metal Square, like the Circular version, is also manufactured with a high pressure die cast aluminium housing to help improve strength and durability. As well as ideal for stairwells, the Amenity Plus range is sealed to IP65 allowing for use in external areas such as under canopies or wall mounting, however is equally suited to a range of internal applications such as corridors, stairways, toilets and storage areas.

In the plant room, 16 Hydra LED's were fitted to help with performance and efficiency. The Hydra is an LED IP65 rated weatherproof batten luminaire made from high quality injection moulded GRP.

The Hydra LED can also be offered in a range of dimming variants, white tunable and with integral three hour emergency. The Hydra LED is supplied with stainless steel clips and screws as standard in order to ensure that the luminaire has tooled access in compliance with regulations. It is ideally suited to industrial applications where protection from dirt and dust ingress and light impact is essential, especially in areas where access is difficult and the cost of maintaining traditional fluorescent sources is high. It is also important to note that the Hydra LED is suitable for use in applications where the temperature ranges from -20°C to $+25^{\circ}\text{C}$.

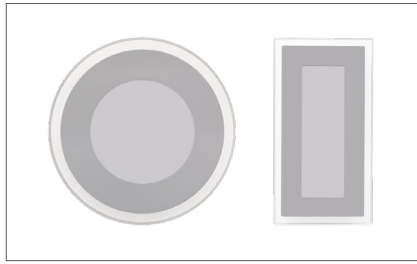


FEATURED PRODUCTS



AMENITY PLUS METAL – CIRCULAR

Overview: The Amenity Plus Metal - Circular is manufactured with a high pressure die cast aluminium housing for improved strength and durability.



VOLITO

Overview: Combining efficiency and flexibility with a striking aesthetic, the Volito offers the ideal solution to those wishing to create drama and impact in any space.



CAPO

Overview: Combining efficiency with form the Capo provides an architectural solution in suspended applications for both ambient and accent lighting.



AMENITY PLUS METAL – SQUARE

Overview: The Amenity Plus Metal - Square is manufactured with a high pressure die cast aluminium housing for improved strength and durability.



HYDRA

Overview: An LED IP65 rated weatherproof batten luminaire made from high quality injection moulded GRP.