



SUNDERLAND ROYAL HOSPITAL

Tyne and Wear

Dextra
LIGHTING

ABOUT THE CLIENT

As part of the South Tyneside and Sunderland NHS Foundation Trust, the Sunderland Royal Hospital provides acute inpatient and outpatient hospital services to people across Sunderland and South Tyneside. As a 970-bedded acute hospital, it also provides a range of specialist services to the wider region, including vascular, renal and cardiology services.

Its most recent developments include state-of-the-art emergency departments for adults and children, endoscopy suite and refurbished renal unit. Its aim is to treat patients promptly and with care in all hospital settings.

The hospital is committed to providing high quality, safe and personal care for each of its patients whether they are receiving care for just a few hours or a few days.

As a new client to Dextra, the hospital required help to reduce energy consumption across its buildings, as well as support with maintenance.

Their preference was to use a single supplier across the entire site and preferably one with the ability to recycle the old lighting, with all luminaires being point-for-point replacements.



THE SOLUTION

Chosen for its compatibility with existing infrastructure and fittings, as well as the fact it is manufactured in the UK (along with all other Dextra products) the Amenity Plus LED Circular was used externally as well as for the toilets and stores, where 200 were installed.

From the same family of products, the Amenity Plus Metal Square was also compatible with existing fittings and was also used in the external, toilet and store areas, with 200 supplied.

Also used externally was the Amenity Exterior Open. 16 of these were installed to provide a tough and durable die cast aluminium housing and injection moulded polycarbonate diffuser that is suited a wide range of internal and external applications whilst maintaining an attractive and modern appearance in three colour options.

In the wards, corridors and offices within the hospital, the Modled Slim was chosen for its particular style as well as ease of install, with 3,000 of these supplied with dimming options and R24H sensor.

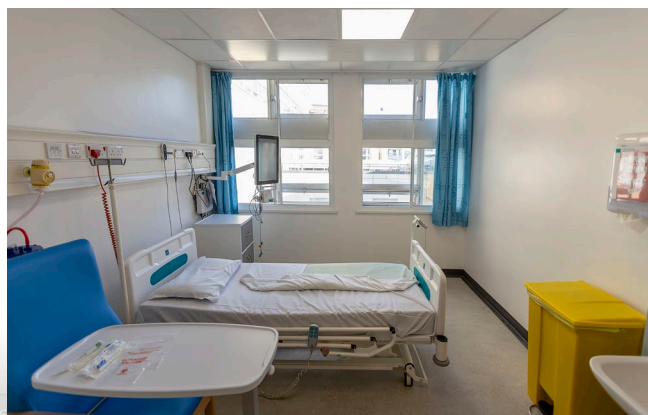
A total of 1,000 Graduate LEDs, provided with dimming options and some with the R25E sensors, were specified for use in the wards and corridors. The Graduate is suitable for installation on conduit, surface mounting or suspension and can be offered

with an optional integral microwave sensor, or the Reacta-Air sensor where wireless grouping of luminaires is required for simultaneous operation. Wireless dimming and control can be offered with our Reacta-Dim system and Reacta-Link options are also available where web-based control and reporting of luminaires is required. For healthcare applications a nightlight can be specified to provide low level lighting during rest periods.

Also used in the ward areas was the IMPS LED, with 20 installed. The IMPS LED is a robust IP65 luminaire for use in applications where the luminaire must be protected from ingress of dirt, dust and water. The steel housing is rated to IP65 and has an ABS injection moulded frame and polycarbonate diffuser providing a rating of IK10.

Used in the wards and the morgue was the Impervia, which is a robust IP65 LED luminaire for use in applications where the luminaire must be protected from ingress of dirt, dust and water.

Elsewhere in the hospital, 400 of Dextra's BTEC luminaire were installed in the waiting areas. The BTEC is an ideal solution for customers who need a premium quality downlight with high quality LEDs and drivers as well as excellent efficiency for a rapid return on investment.



THE SOLUTION

Also used in the waiting areas and cafes was the Comtec LED Surface, where 16 were installed to help provide the ideal product for solid ceilings or where there is insufficient ceiling void for a recessed luminaire.

Easy to install and very effective, 100 Hydra LEDs were installed in the plant rooms. The Hydra is ideally suited to industrial applications where protection from dirt and dust ingress and light impact is essential, especially in areas where access is difficult and the cost of maintaining traditional fluorescent sources is high.

Used in the plant room, alongside the Hydra, was the Eco Impervia LED, with 300 installed. The Eco Impervia is a heavy duty and robust IP65 rated luminaire from the Dexeco range as an energy saving lighting fixture designed for use in tougher environments, but without compromising on cost savings or environmental factors.

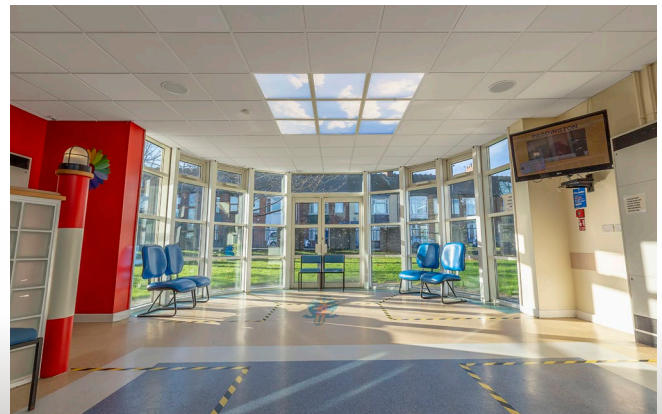
The Eco Impervia offers presence detection and bright out control meaning it does not waste energy unnecessarily. Suitable for both low level internal and under canopy use, the Eco Impervia is a sound choice for energy saving lighting solutions in areas such as tunnels, walkways and dusty environments. The straightforward, no nonsense design of the Eco Impervia makes it a non-intrusive energy saving lighting fixture in many applications. The eco nature of this product will ensure minimum running costs for maximum output.

In the toilets and changing rooms, 100 of Dextra's Amenity Decorative LEDs were supplied. This luminaire is part of a family range that offers an attractive solution for amenity applications such as corridors and stairwells and is manufactured from robust injection moulded polycarbonate.

In the hospital car parks, Dextra supplied 70 of its stylish Opus 360 luminaires. Offering up to 60,000lm output with efficiency of 147lm/w, the Opus 360 High Output provides an extremely cost-effective solution for car parks and other external spaces whilst minimising operating costs for both maintenance and power consumption.

Also used in the car parks was the Opus Column, with 4 installed. This luminaire offers an architecturally designed LED column top luminaire ideally suited to applications such as car parks and building exteriors. An IP65 rated die cast aluminium housing, weather resistant matt grey paint finish and toughened glass cover ensure that this range is suitable for use in a wide range of applications, whilst optical control is achieved through high efficiency lenses which give a range of distributions allowing the luminaire to be tailored to your application and maximise spacings between columns.

Also used on the project was the Opus Wallpack on the external walls, with 150 supplied and the Opus 3, with 60 mounted on the building's exterior.



FEATURED PRODUCTS



AMENITY PLUS – CIRCULAR

Overview: The Amenity Plus Circular is available in lumen outputs ranging from 1500 to 3000 and is manufactured with an injection moulded polycarbonate housing and diffuser.



AMENITY PLUS METAL – SQUARE

Overview: The Amenity Plus Metal - Square is manufactured with a high pressure die cast aluminium housing for improved strength and durability.



AMENITY EXTERIOR – OPEN

Overview: The Amenity Exterior Open is manufactured with a tough and durable die cast aluminium housing and injection moulded polycarbonate diffuser.



MOD SLIM

Overview: The MOD Slim is a highly efficient and versatile backlit modular range of luminaires available in a wide range of housing styles and lumen outputs.



GRADUATE

Overview: The Graduate is a mainstay of the Dextra range and has been extensively used in schools and hospitals nationwide.



IMPS

Overview: A sturdy and durable surface mounted luminaire suitable for dirty, dusty and wet environments.

FEATURED PRODUCTS



BTEC

Overview: The BTEC Downlight is ideal for customers who need a premium quality downlight with high quality LEDs and drivers as well as excellent efficiency for a rapid return on investment



COMTEC SURFACE

Overview: The Comtec Surface compliments our recessed Comtec range.



HYDRA

Overview: An LED IP65 rated weatherproof batten luminaire made from high quality injection moulded GRP.



AMENITY DECORATIVE

Overview: The Amenity Decorative range offers an attractive solution for amenity applications such as corridors and stairwells and is manufactured from robust injection moulded polycarbonate.



OPUS 360

Overview: The Opus 360 complements our Opus Column range with a 360 degree distribution, ideal for car parks and similar applications.



OPUS COLUMN

Overview: The Opus Column is the successor to our highly successful Impervia LED Column range.

FEATURED PRODUCTS



OPUS WALLPACK

Overview: The Opus Wallpack combines a modern and minimalist design with a durable and robust construction and a lensed optic that minimises upward light distribution and light pollution



OPUS 3

Overview: The Opus 3 floodlight brings a wider range of variants to our original Opus LED range. With four individual housing sizes and lumen outputs from 2700lm to 24,827lm luminaire lumens.