

Tunable White Lighting - Overview

Fully automatic system

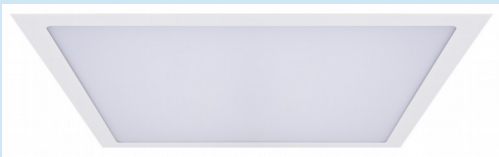
- Customer's predefined circadian cycle is automatically executed by a time based lighting controller.
- Optional wall controller enables the user to manually set the desired tunable white colour and lighting intensity for one or more areas.
- Optional BACnet BMS Gateway interface.
- Optional occupancy sensors to enable luminaires in unoccupied areas to be turned off.

Manual system

- Manual wall controller enables the user to manually set the desired tunable white colour and lighting intensity
- Four pre-set or customisable scenes
- Optional occupancy sensors to enable luminaires in unoccupied areas to be turned off.

Fully automatic system (24/7 circadian rhythm)

Tunable White DALI device type 8 LED luminaires



DALI Router



Part codes
C13951 Router
C4208 Enclosure
C6917 Breaker

- Maximum 128 DALI Devices
- Maximum 2x250mA DALI BUS
- More than 16 DALI Groups
- More than 16 DALI Scenes

Manual colour temperature and intensity DALI device type 8 wall controller



Part codes
C2580 Backplate
C2581 White fascia
C2582 Black fascia

DALI Occupancy Sensor



Part code
C13800 Sensor

BACnet BMS Gateway

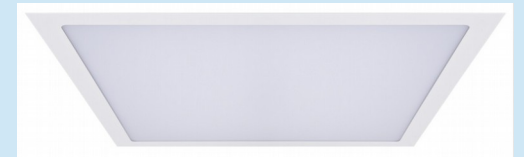


Part code
C14381 – BACnet 435
C13810 – Power supply

The natural circadian rhythm of a person can be supported by using warmer more relaxing light with lower intensity in the morning and evenings, and cooler colour light during a typical working day to energise us. This lighting can also be tuned either cooler or warmer as desired throughout the day to suit our needs.

Manual system (non circadian rhythm)

Tunable White DALI device type 8 LED luminaires



DALI Power supply



Part codes
C13897 Power unit

- Maximum 64 DALI Devices
- Maximum 250mA DALI BUS
- 16 DALI Groups
- 16 DALI Scenes

Manual colour temperature and intensity DALI device type 8 wall controller



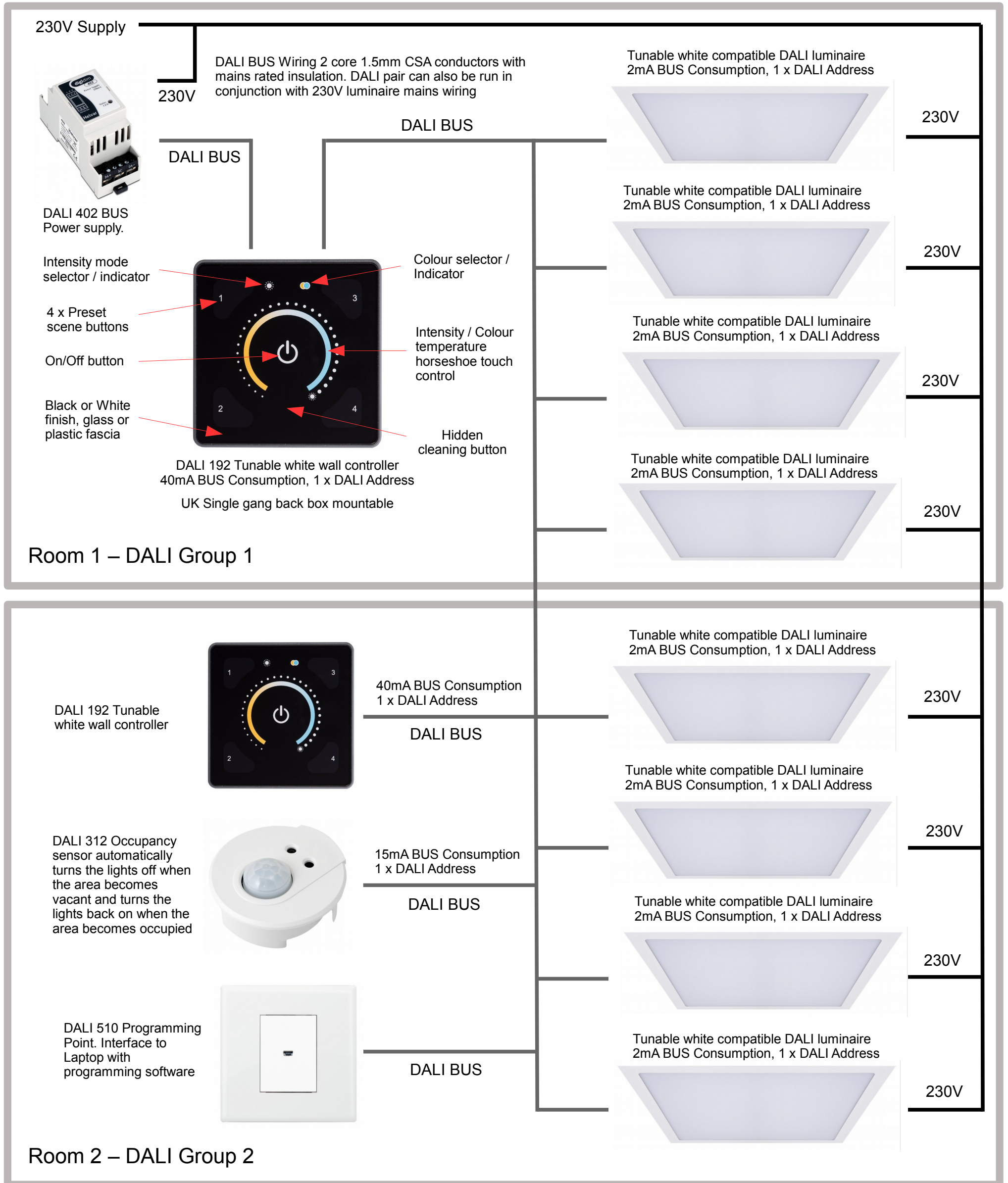
Part codes
C2580 Backplate
C2581 White fascia
C2582 Black fascia

DALI Occupancy Sensor



Part code
C13800 Sensor

Tunable white – Manual system example

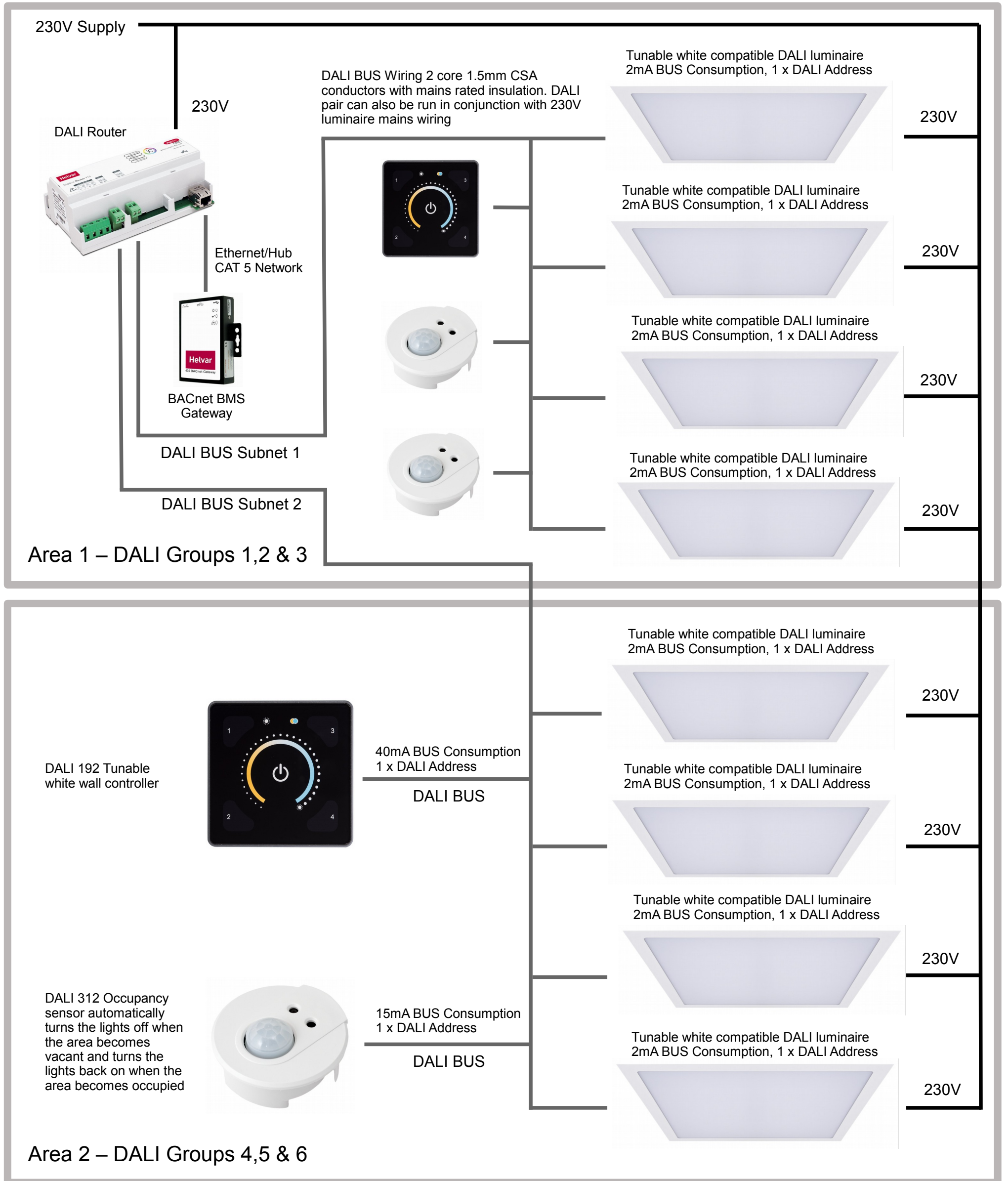


Technical:

The number of luminaires and DALI Devices which can be connected together is limited by either the maximum number of available DALI addresses or available DALI BUS power supply:

- Maximum 64 DALI devices
- Maximum 250mA DALI BUS Power supply. Maximum 300m DALI wiring pair when using 1.5mm CSA conductors
- 16 DALI groups
- 16 DALI scenes
- DALI 402 BUS Power requires a 230V, 50Hz AC supply and outputs the DALI BUS voltage, also requires a DIN Rail 2 module wide enclosure (AK05)

Tunable white – Fully automatic system example



Technical:

The number of luminaires and DALI Devices which can be connected together is limited by either the maximum number of available DALI addresses or available DALI subnet BUS power supplies:

- Maximum 128 DALI devices
- Maximum 2x250mA DALI BUS Power supply. Maximum 300m DALI wiring pair per subnet when using 1.5mm CSA conductors
- Ethernet interface
- More than 16 DALI groups
- More than 16 DALI scenes
- DALI Router requires a 230V, 50Hz AC supply and outputs the DALI BUS voltages, also requires a DIN Rail 12 module wide enclosure (AK12)