

EMERGENCY EXIT SIGN

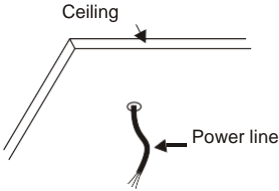
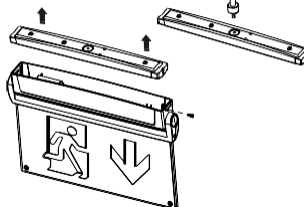
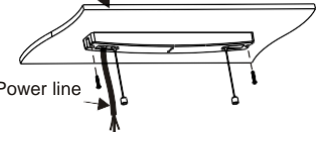
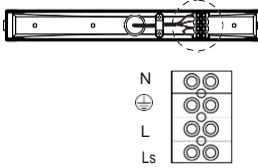
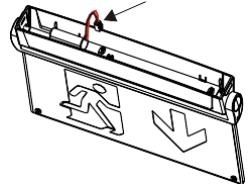
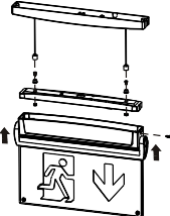
DIL-0300-0056

Model: HBE2 LED ST3

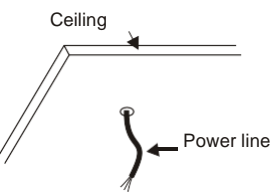
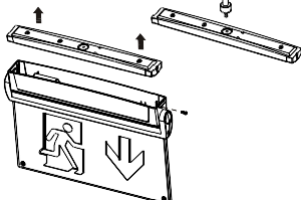
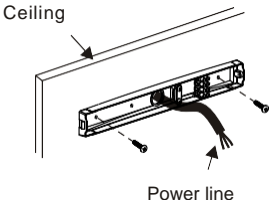
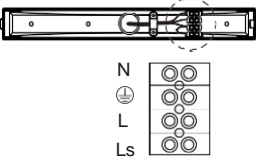
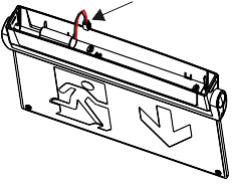
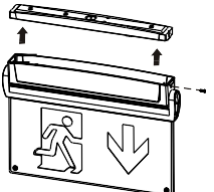
SPECIFICATION:

1. Operating ambient temperature: 0 - 40°C.
2. Operating relative humidity: less than 90%.
3. Rated voltage: 220-240V 50/60Hz.
4. Rated power: 2.8W.
5. Conversion time: 1 second.
6. LED: SMT LED
7. Emergency duration: more than 3 hours.
8. Battery installed or replaced: 3.6V 800mAh Ni-Cd.
9. Fuse installed or replaced: 1A/3.15A 250V.
10. Recharge time: 24 hours.

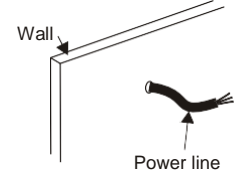
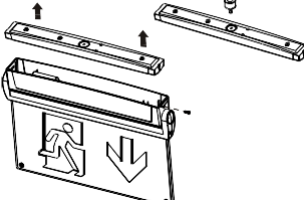
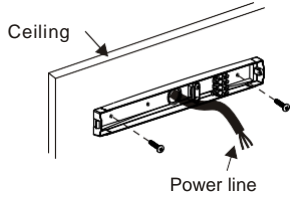
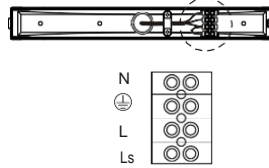
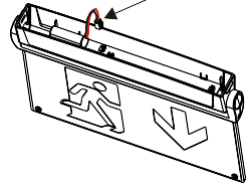
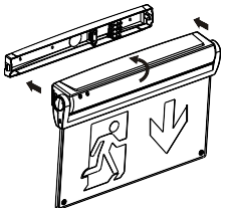
Ceiling Suspended Installation

<p>1 Drill a hole on the ceiling and feed the mains cable through.</p> 	<p>2 Open the product and drill the entry hole on the top cover.</p> 	<p>3 Install the suspended bracket on the ceiling.</p> 
<p>4 Connect the power line to the terminal block (NOTE: disconnect the power.)</p> 	<p>5 Connect to the battery wire.</p> 	<p>6 Install the product in the suspended bracket.</p> 

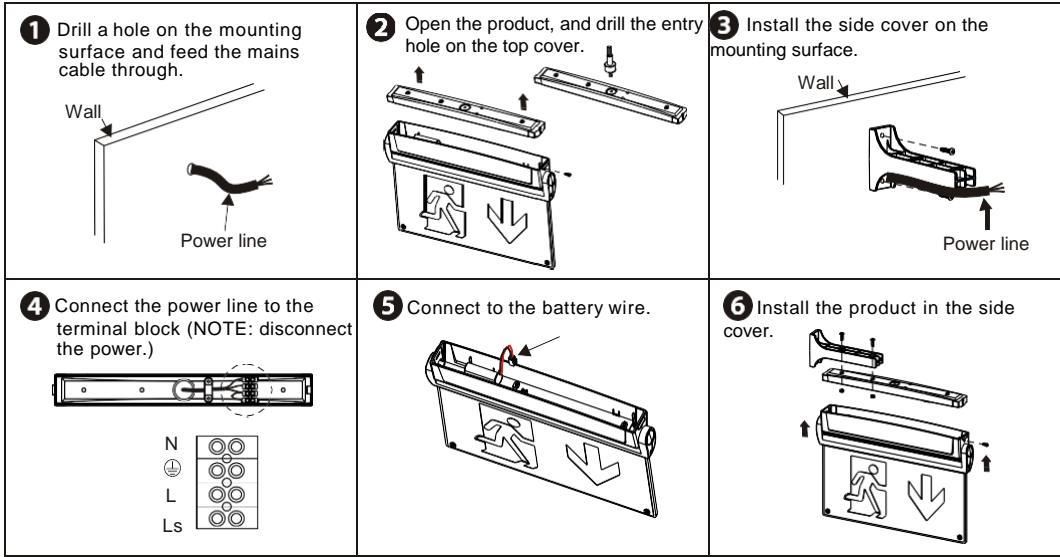
Ceiling-mounted

<p>1 Drill a hole on the ceiling and feed the mains cable through.</p> 	<p>2 Open the product, and drill the entry hole on the top cover.</p> 	<p>3 Install the top cover on the ceiling.</p> 
<p>4 Connect the power line to the terminal block (NOTE: disconnect the power.)</p> 	<p>5 Connect to the battery wire.</p> 	<p>6 Install the product on the top cover.</p> 

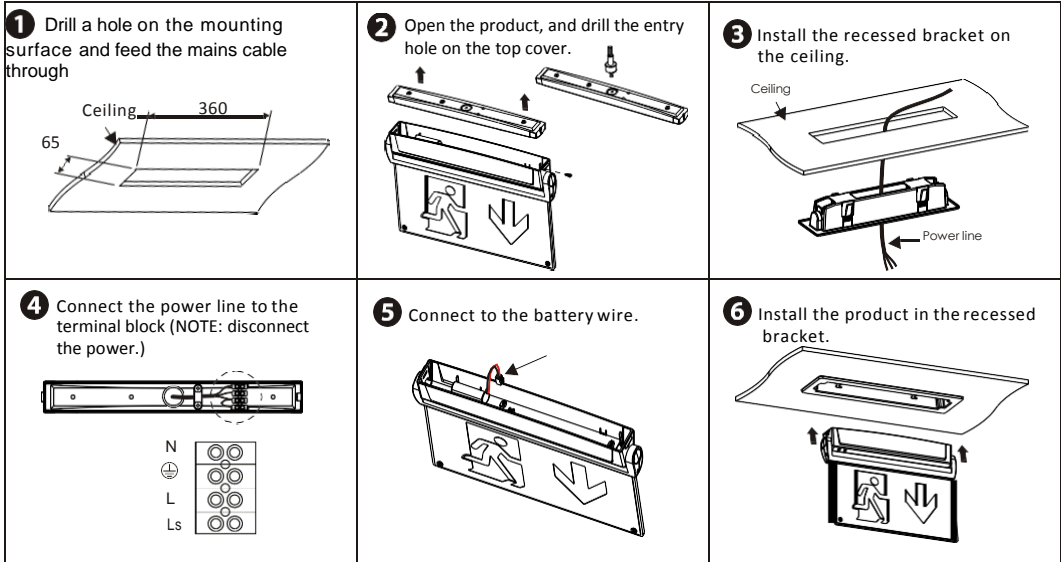
Front-mounted

<p>1 Drill a hole on the mounting surface and feed the mains cable through.</p> 	<p>2 Open the product and drill the entry hole on the top cover.</p> 	<p>3 Install the top cover on the mounting surface.</p> 
<p>4 Connect the power line to the terminal block (NOTE: disconnect the power.)</p> 	<p>5 Connect to the battery wire.</p> 	<p>6 Rotate the product and install it in the top cover.</p> 

Side-mounted



Recessed-mounted



INSTALLATION:

1. Connect mains supply wiring.
2. Power line & battery wires should be connected securely, and all screws fixed.
3. Switch on 220-240V AC supply and check if the green LED indicator illuminates to confirm charging of batteries.
4. Allow a short period for part charging of the batteries and then isolate the mains supply to the fitting in order to check the correct operation of the fitting in emergency mode. In the first use, after a continuous charge for 24 hours, a mains failure should be simulated to ensure that the fitting work for its specified time (only at a safe & appropriate time). The fitting will be fully charged with in 24 hours' continuous charging.

SAFETY INSTRUCTIONS:

1. Minimum distances around the apparatus should be ensured for sufficient ventilation.
2. The ventilation should not be impeded by being covered with newspapers, table-cloths, curtains, etc.
3. Pay attention to the environment by disposal of batteries.
4. If the external flexible cable or cord of this luminaire is damaged, it shall be exclusively replaced by a qualified person in order to avoid hazard.
5. Batteries are Ni-Cd and have a normal service life of approximately 4 years. Batteries should in any case, be replaced only with the type specified, and exclusively replaced by a qualified person.
6. Before commencing installation (and before maintenance at any time), ensure that the main supply and the battery pack are disconnected.

PCB TEST SWITCH:

The purpose of the switch: When the test switch is pressed, the product will go into emergency mode.

In AC input:
 Press for 1 second :Timing Restart.
 Press for 3 seconds :LEDs on, Auto test for 5 minutes.



INDICATOR PERFORMANCE:

- Normal fitting: green indicator working.
- Battery failure: red indicator flashing. (Flash once every 3 seconds.)
- Lighting source failure: red indicator flashing. (Flash twice every 3 seconds)
- Less than the rated duration time: red indicator fast flashing. (Flash three times every 3 seconds)

PREFACE:

The circuit is controlled by IC with small components that includes multiple functions, such as battery discharge protection, LED indicator etc. to ensure the effective performance of the fitting.