



Supply Voltage Range	220-240 AC, 50/60 Hz
Origin	Dextra Group plc.
Emergency Duration (if applicable)	3Hr
Ingress Protection (unless stated otherwise)	IP20

### WARNING - THIS LUMINAIRE MUST BE EARTHED

This luminaire has been tested and is manufactured to comply with BS EN 60598: specification for general requirements and tests. It should be installed by a suitably qualified person in accordance with IEE regulations and relevant legislation.

**CAUTION:** there is a potential risk of electric shock from the LED boards when the product is operational with the cover removed.

**NOTE:** INSTALLATION AND OPERATION OF THE LUMINAIRE BEYOND ITS SCOPE OF SUPPLY WILL INVALIDATE THE WARRANTY.

This luminaire is only suitable for domestic, light industrial and industrial environments which are within the scope of EN55015. Operating temperature = 0°C – 25°C. If the temperature exceeds the driver's maximum Ta rating, there is a safety mechanism where the driver will either dim or switch off to allow it to cool (Unless other operating temperatures are specified in product literature).

For the maximum number of luminaires that may be interconnected or the maximum total current that may be drawn by means of couplers provided for looping-in connection to the mains supply, confirm with specific manufacturers' data-sheet.

The light source of this luminaire is not replaceable when the light source reaches its end of life the whole luminaire shall be replaced.

### LUMINAIRES FITTED WITH A MAINTAINED EMERGENCY PACK.

**IMPORTANT:** When the mains supply is isolated, the output terminals can still be live if the battery is connected. Both mains and batteries must be isolated before servicing.

This luminaire is supplied converted for 3 hour maintained emergency operation.

Fitting should be installed in the usual way as detailed on the installation instruction leaflet supplied.

A secondary unswitched live connection (L2) should be fed to the in-line within the fitting to supply a monitor live and for the battery charging circuit. The unswitched supply must be taken from the same phase as the switched luminaire supply.

Once installed the integral/remote batteries must be commissioned. The battery cells must be connected to the emergency module (in some instances these are left disconnected for transportation). Batteries are connected either by a plug and socket arrangement or by connecting directly to the battery spade terminal.

After making the unswitched mains supply "live", the charging status indicator illuminates green to indicate that the batteries are charging. Upon disconnection of this supply the indicator will extinguish and the emergency LED board will light.

A period of 24 hours should be allowed before a full discharge test is carried out to ensure the battery is fully charged. A few repeated full charge and discharge cycles may be required to condition the battery to its maximum capacity.

A maintenance sheet indicating testing intervals and duration is included and should be completed by the installation engineer after commissioning and issued to the customers maintenance department.

The test record card should be completed at specified intervals to indicate that the full 3 hour duration is still being obtained.

Batteries should be replaced once the rated duration can no longer be met.

Excessive disconnection of the unswitched mains supply may result in premature battery failure or failure of the luminaire.

There are no user serviceable parts in the module.

Battery electrolyte can be harmful to eyes and open wounds. Care must be taken to avoid puncturing the case and allowing electrolyte to escape. If electrolyte touches the skin, flush with water.

Do not incinerate batteries.

Central battery versions of this luminaire are not suitable for loop in loop out wiring.

### DIMMING NOTES:

Always wire the fitting as per the labels indicated on the terminal blocks.

For mains wiring of fittings with integral sensors refer to separate sensor installation leaflet.

EMERGENCY  
AUTOTEST

AT3

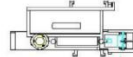
AT3



OPTIONAL

EMERGENCY  
UNSWITCHED LIVE

L2



OPTIONAL

SWITCHED LIVE

L3



OPTIONAL  
- SWITCH DIMMING - PUSH TO MAKE RETRACTIVE  
- CORRIDOR FUNCTION WITH EXTERNAL SENSOR

SWITCHED LIVE

L1



EARTH

E

NEUTRAL

N



DIMMING  
HFR / DSI / DALI

- / D1 / DA

+ / D2 / DA



OPTIONAL  
- NOT SWITCH DIMMING  
- ONLY HFR IS POLARITY SENSITIVE  
- FOLLOW LABELS IN FITTING