



# PRODUCT SPECIFICATION

---

AluLED



---

## INTRODUCTION

---

The AluLED is designed for indirect accent lighting to create a range of decorative effects. The slim design ensures the AluLED is ideal for cove lighting, shadow gaps and other concealed spaces where decorative lighting effects are required to enhance the space. With an IP67 construction the AluLED is suitable for both internal and external applications whilst the modular design and spring steel mounting clip allows multiple lengths to be operated from a single driver for quick and simple installation to suit a range of concealed applications.

UK  
CA

CE

IP67

---

## APPLICATION

---

- Accent Lighting
- Canteen
- Commercial / Offices
- Corridor
- Display Lighting
- Exterior
- Food / Clean Area
- Healthcare / Social Housing
- Hotel / Leisure

- Kitchen
- Office
- Retail
- Stairwell
- Toilet

---

## SPECIFICATION

---

### CONSTRUCTION

- Pre wired with IP67 click lock connectors
- Spring steel mounting clip
- IP67 ingress protection

### ENVIRONMENTAL

- Designed to allow simple replacement of components with commonly available tools in compliance with the Eco Design Directive, please see the installation leaflet for maintenance instructions.
- Powered by European branded drivers and emergency modules ensuring replacement parts are easily sourced.
- Every luminaire is labelled with a unique ID number allowing easy identification of spare parts for the lifetime of the product.
- Contains no single use plastics or polystyrene packaging.
- Supplied in plain card boxes with paper tape ensuring packaging is easily recycled.
- Designed to allow simple disassembly for end of life recycling.
- UK based manufacturing providing local support throughout the product lifetime and minimising transportation miles.

### VARIATIONS

- 120mm, 320mm, 920mm, 1220mm lengths
- Custom lengths available upon request
- Anti-tamper clips available
- Large range of remote LED drivers available with different dimming options
- 3000k or 4000k colour temperatures

### PERFORMANCE

- AluLED is suitable for -20 to +85°C ambient temperatures, driver operating temperatures may vary from this specification

---

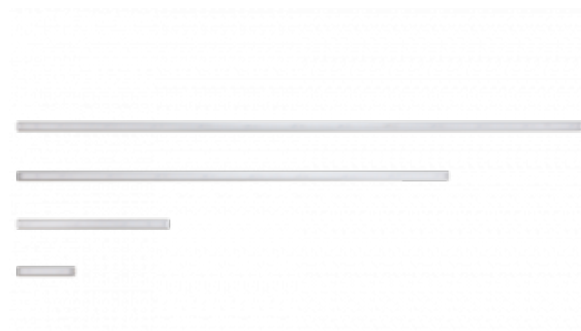
## IMAGES

---

### PRODUCT IMAGES



AluLED IP67 (Clear)



AluLED IP20 (Opal) (Available on request)



AluLED IP67 (Clear) Close Up



AluLED Cross Section

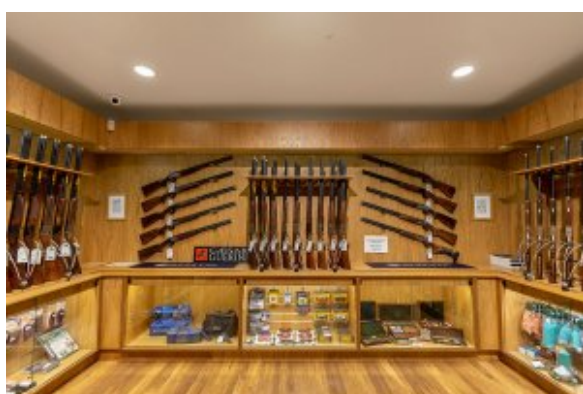


AluLED Cool White

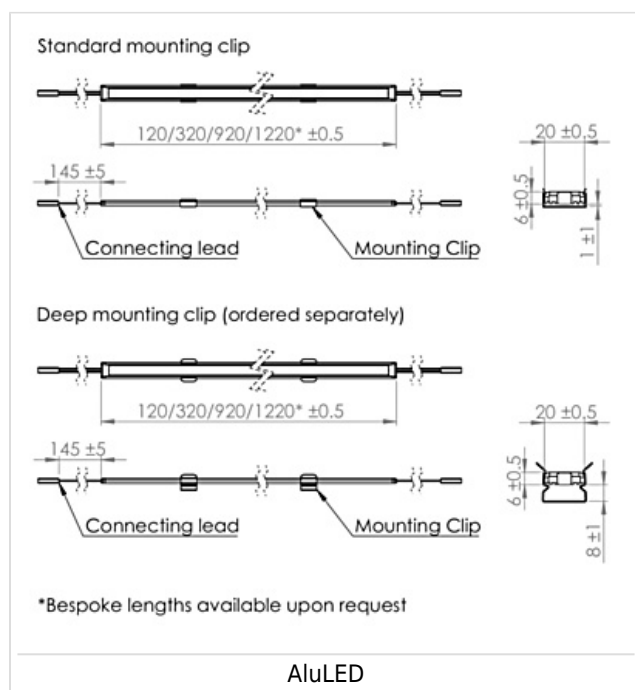


AluLED Warm White

### PROJECT IMAGES



## TECHNICAL



## WARRANTY

At Dextra our commitment to service has been at the forefront throughout our history spanning more than forty years in the UK lighting market. Our service ethos extends beyond design and delivery, we believe supporting your installation throughout the warranty period is equally crucial, whilst the strength and longevity of Dextra Group provides peace of mind that our warranty will be supported throughout.

The Dextra range is supplied with a five year warranty commencing from the date of delivery. During the first three years defects will be repaired on site and the warranty will include both parts and labour. For the final two years drivers, emergency modules, wireless modules, sensors and LED circuits will be supplied free of charge to replace defective components, labour and other associated costs are not included.

Certain ranges and components are subject to exemptions:

- Lithium batteries are provided with a three year warranty for parts and labour. Nickel Metal Hydride and Nickel Cadmium batteries are provided with a one year warranty for parts and labour.
- Emergency luminaires including AME LED, EXI LED, EXI2 LED, EXI Track, HBE LED, HBE2 LED, OAT2 LED, OEZ LED and Twinspot with Nickel Metal Hydride batteries are supplied with a one year warranty for parts and labour. Lithium variants of these ranges are supplied with a three year warranty for parts and labour with the exception of the AME2, EXI3, HBE3 and TWS IP65 L7 ranges which are supplied with a one year parts and labour warranty. TWS IP65 L7 in autotest and wireless variants are supplied with the standard three year lithium battery warranty.
- Protec Micro, PTECF7 Fire Rated Downlights, Serenus and the Opus Sconce are provided with a five year replacement luminaire only warranty. Protec FR Fire Rated Downlights are provided with a 2 year replacement luminaire only warranty.
- Controls systems such as standalone sensors, switches, marshalling boxes and cabling are provided with a one year warranty for both parts and labour. DALI control systems are provided with a two year warranty for both parts and labour.

- LEDextra ranges are supplied with a three year parts or replacement luminaire only warranty with the exception of the IMPR RGBW, the Runway RGBW and the MOD RGBW. These three ranges are supplied with our standard five year warranty during which defects within the first three years will be repaired on site and the warranty includes both parts and labour. For the final two years free of charge replacement components only will be supplied to rectify any failures but labour and other associated costs are not included.
- LEDEX ranges are supplied with a three year replacement luminaire only warranty.

All warranties are subject to correct use of the product and will be invalidated by misuse, for example incorrect installation, unsuitable environmental conditions or incorrect maintenance. It is the duty of the customer to ensure that all the fault lies with the luminaire prior to requesting replacement parts or site repairs. In the event that no defect is found with the product our costs for attending site will be recharged to the customer and credit will not be issued against returned products. No consequential losses incurred resulting from any defect with our product will be reimbursed.

Given the nature of LED technology a small percentage of LEDs may fail during the lifetime of a luminaire, this does not cause a reduction in lumen output. As such LED luminaires are only deemed to be faulty for warranty purposes when in excess of ten percent of LEDs have failed in a single luminaire

On site repair of products under warranty will be undertaken during normal working hours, 9am to 5pm Monday to Friday, and will require unrestricted access to luminaires. Where required Dextra will provide access equipment to carry out repairs at height, should luminaires have been installed in locations where reasonable provision for maintenance access has not been made we reserve the right to supply replacement product only.

If you require any assistance with regards to our products please contact our Customer Services department on 01747 858100.

[DOWNLOAD WARRANTY PDF](#)

## ORDER CODES

### LUMINAIRE

Code	Description	Power	Luminous Flux
AluLED1204C	AluLED, 120mm, 4000k, IP67, 47mA, Colour 84	1.13W	100lm
AluLED1203C	AluLED, 120mm, 3000k, IP67, 47mA, Colour 83	1.13W	90lm
AluLED3204C	AluLED, 320mm, 4000k, IP67, 140mA, Colour 84	3.4W	300lm
AluLED3203C	AluLED, 320mm, 3000k, IP67, 140mA, Colour 83	3.4W	240lm
AluLED9204C	AluLED, 920mm, 4000k, IP67, 420mA, Colour 84	10.1W	900lm
AluLED9203C	AluLED, 920mm, 3000k, IP67, 420mA, Colour 83	10.1W	720lm
AluLED12204C	AluLED, 1220mm, 4000k, IP67, 560mA, Colour 84	13.5W	1200lm
AluLED12203C	AluLED, 1220mm, 3000k, IP67, 560mA, Colour 83	13.5W	960lm
AluLED IP20 Opal available on request			

### MISCELLANEOUS

Code	Description
C569	2 Strand Starter lead
C5691	2 Strand interconnecting lead 500mm
C5638	AluLED Deep Clip