



PRODUCT SPECIFICATION

AluLED



INTRODUCTION

AluLED is a compact and reliable solution to indirect lighting. The size and simple installation makes AluLED ideal for mounting in tight shadow gaps and under lips. Also, AluLED negates the requirement for cutting, sticking and soldering that other indirect lighting may require. Available in both 3000k and 4000k colour temperatures, AluLED is extremely versatile, quick and efficient to install.

- CE
- IP67

APPLICATION

- Accent Lighting
- Canteen
- Commercial/Offices
- Corridor
- Display Lighting
- Exterior
- Food/Clean Area
- Healthcare/Social Housing
- Hotel/Leisure

- Kitchen
- Office
- Retail
- Stairwell
- Toilet

SPECIFICATION

- 3000K or 4000K colour temperatures
- 120mm, 320mm, 920mm, 1220mm lengths
- Custom lengths available upon request
- IP20 and IP67 options of ingress protection
- All variants come pre wired with IP67 click lock connectors
- Large range of remote LED drivers available with different dimming options
- Metal clip mounting
- Anti tamper clips available

IMAGES

PRODUCT IMAGES



AluLED Opaque



AluLED Clear



AluLED Close Up



AluLED Cross Section

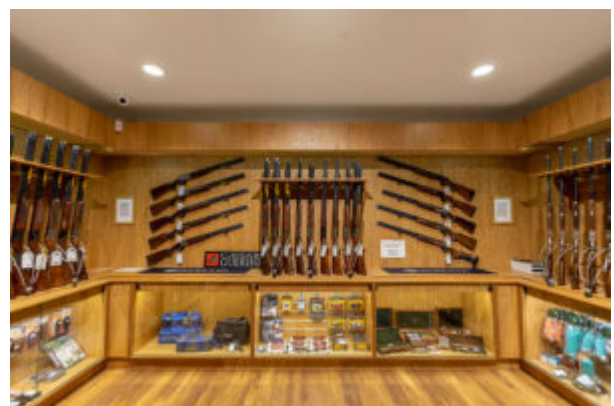
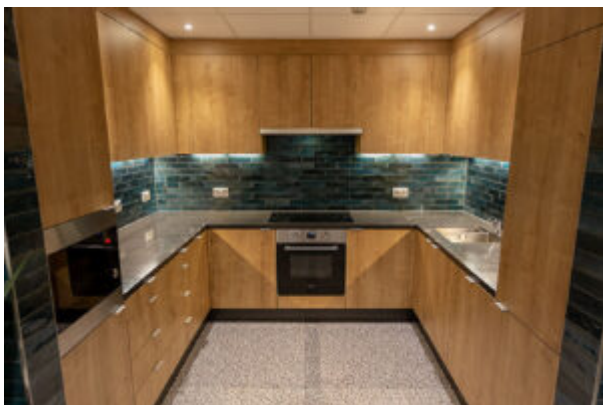


AluLED Cool White

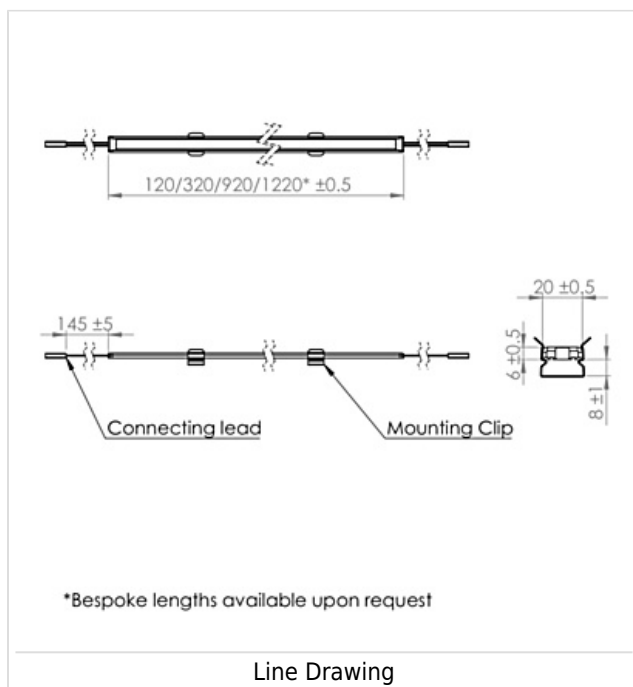


AluLED Warm White

PROJECT IMAGES



TECHNICAL



WARRANTY

At Dextra our commitment to service has been at the forefront throughout our history spanning more than forty years in the UK lighting market. Our service ethos extends beyond design and delivery, we believe supporting your installation throughout the warranty period is equally crucial, whilst the strength and longevity of Dextra Group provides peace of mind that our warranty will be supported throughout.

The Dextra range is supplied with a five year warranty commencing from the date of delivery. During the first three years defects will be repaired on site and the warranty will include both parts and labour. For the final two years drivers, emergency modules, wireless modules, sensors and LED circuits will be supplied free of charge to replace defective components, labour and other associated costs are not included.

Certain ranges and components are subject to exemptions:

- Lithium batteries are provided with a three year warranty for parts and labour. Nickel Metal Hydride and Nickel Cadmium batteries are provided with a one year warranty for parts and labour.
- Emergency luminaires including AME LED, EX1 LED, EX12 LED, EX1 Track, HBE LED, HBE2 LED, OAT2 LED, OEZ LED and Twinspot with Nickel Metal Hydride batteries are supplied with a one year warranty for parts and labour. Lithium variants of these ranges are supplied with a three year warranty for parts and labour with the exception of the AME2, EX13, HBE3 and TWS IP65 L7 ranges which are supplied with a one year parts and labour warranty.
- Protec Micro, 7W Fire Rated Downlights and Serenus are provided with a five year replacement luminaire only warranty.
- Controls systems such as standalone sensors, switches, marshalling boxes and cabling are provided with a one year warranty for both parts and labour. DALI control systems are provided with a two year warranty for both parts and

labour.

- LEDextra ranges including Glide Power, Glide Mini, Glide RGBW, Colour Glide, Glide In Ground, Glide Pixel and AluLED ranges are supplied with a three year parts or replacement luminaire only warranty.
- LEDEX ranges are supplied with a three year replacement luminaire only warranty.

All warranties are subject to correct use of the product and will be invalidated by misuse, for example incorrect installation, unsuitable environmental conditions or incorrect maintenance. It is the duty of the customer to ensure that all the fault lies with the luminaire prior to requesting replacement parts or site repairs. In the event that no defect is found with the product our costs for attending site will be recharged to the customer and credit will not be issued against returned products. No consequential losses incurred resulting from any defect with our product will be reimbursed.

Given the nature of LED technology a small percentage of LEDs may fail during the lifetime of a luminaire, this does not cause a reduction in lumen output. As such LED luminaires are only deemed to be faulty for warranty purposes when in excess of ten percent of LEDs have failed in a single luminaire

On site repair of products under warranty will be undertaken during normal working hours, 9am to 5pm Monday to Friday, and will require unrestricted access to luminaires. Where required Dextra will provide access equipment to carry out repairs at height, should luminaires have been installed in locations where reasonable provision for maintenance access has not been made we reserve the right to supply replacement product only.

If you require any assistance with regards to our products please contact our Customer Services department on 01747 858100.

[DOWNLOAD WARRANTY PDF](#)

ORDER CODES

LUMINAIRE CODES

Code	Description	Circuit Wattages	Luminous Flux
AluLED1203C	AluLED, 120mm, 3000k, IP66/67, 47mA	1.13W	90lm
AluLED3203C	AluLED, 320mm, 3000k, IP66/67, 140mA	3.4W	240lm
AluLED9203C	AluLED, 920mm, 3000k, IP66/67, 420mA	10.1W	720lm
AluLED12203C	AluLED, 1220mm, 3000k, IP66/67, 560mA	13.5W	960lm
AluLED1204C	AluLED, 120mm, 4000k, IP66/67, 47mA	1.13W	100lm
AluLED3204C	AluLED, 320mm, 4000k, IP66/67, 140mA	3.4W	300lm
AluLED9204C	AluLED, 920mm, 4000k, IP66/67, 420mA	10.1W	900lm
AluLED12204C	AluLED, 1220mm, 4000k, IP66/67, 560mA	13.5W	1200lm

ACCESSORIES

Description
2 strand starter lead, 250mm, IP 66/67
2 strand interconnecting lead, IP66/67
Deep anti-tamper clip