



# PRODUCT SPECIFICATION

---

CAPO



---

## INTRODUCTION

---

Combining efficiency with form the Capo provides an architectural solution in suspended applications for both ambient and accent lighting. With anodised spun rear housing, translucent collar available in a range of colours and opal refractor the Capo provides a decorative and attractive installation that can also be tailored to suit any corporate theme.

With two lumen options and both dimming and lithium emergency options the performance of the Capo can easily be customised to your needs. In all options the control gear is housed within the same luminaire design with no need for remote packs or ceiling housings ensuring that the look and feel of the space is not compromised.

The Capo is supplied with a highly efficient chip on board source providing similar lumens to 70w HID sources whilst typically consuming half the energy and eliminating the need to replace lamps ensuring significant operating cost reduction compared to HID alternatives. Wireless dimming and control can be offered with our Reacta-Dim system and Reacta-Link options are also available where web based control and reporting of luminaires is required.

- CE
- IP20
- L90 / 60K OPERATING HOURS
- 3 STEP MACADAM ELLIPSE

---

## APPLICATION

---

- Canteen

- Commercial/Offices
- Education
- Hotel/Leisure
- Retail
- Stairwell

---

## SPECIFICATION

---

### CONSTRUCTION

- Anodised spun aluminium housing.
- Translucent collar in a range of colour options.
- Opal refractor.

### PERFORMANCE

- Available in 2992lm and 3847lm luminaire lumen options.
- LM80 verified: 90% LED lumen maintenance at 60,000 operating hours.

### CONTROL

- Available with Digital, DALI, Switch Dimming and Analogue Dimming control gear.

### EMERGENCY

- Available with optional standard, self test and autotest integral emergency with lithium batteries for extended warranty and lifetime.

### INSTALLATION

- Supplied complete with three metre suspension cable.

---

## IMAGES

---

### PRODUCT IMAGES



The Capo LED with grey body



The Capo LED with white body



The Capo LED with red collar



The Capo LED with orange collar

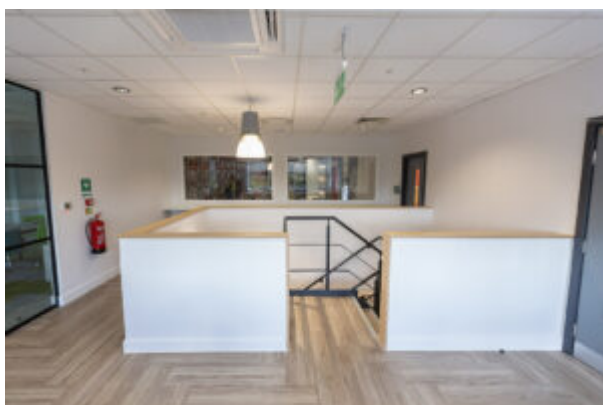


The Capo LED with green collar



The Capo LED with blue collar

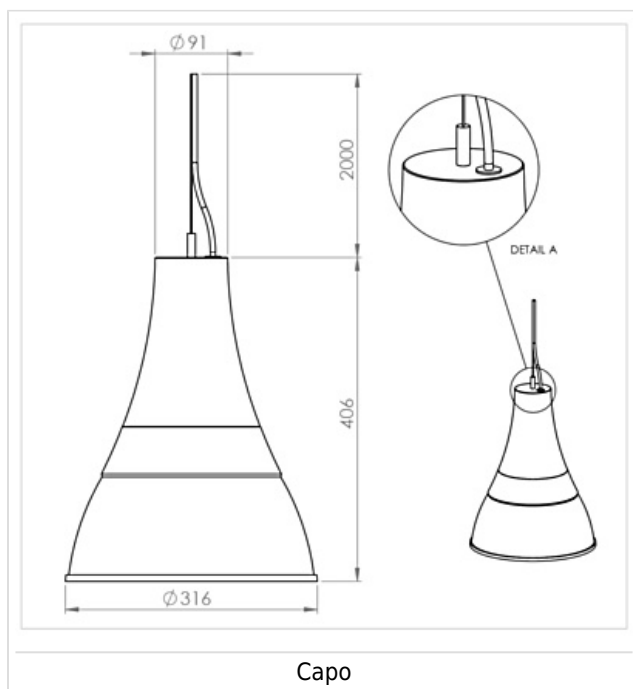
PROJECT IMAGES



---

## TECHNICAL

---



---

## WARRANTY

---

At Dextra our commitment to service has been at the forefront throughout our history spanning more than forty years in the UK lighting market. Our service ethos extends beyond design and delivery, we believe supporting your installation throughout the warranty period is equally crucial, whilst the strength and longevity of Dextra Group provides peace of mind that our warranty will be supported throughout.

The Dextra range is supplied with a five year warranty commencing from the date of delivery. During the first three years defects will be repaired on site and the warranty will include both parts and labour. For the final two years drivers, emergency modules, wireless modules, sensors and LED circuits will be supplied free of charge to replace defective components, labour and other associated costs are not included.

Certain ranges and components are subject to exemptions:

- Lithium batteries are provided with a three year warranty for parts and labour. Nickel Metal Hydride and Nickel Cadmium batteries are provided with a one year warranty for parts and labour.
- Emergency luminaires including AME LED, EXI LED, EXI2 LED, EXI Track, HBE LED, HBE2 LED, OAT2 LED, OEZ LED and Twinspot with Nickel Metal Hydride batteries are supplied with a one year warranty for parts and labour. Lithium variants of these ranges are supplied with a three year warranty for parts and labour with the exception of the AME2, EXI3, HBE3 and TWS IP65 L7 ranges which are supplied with a one year parts and labour warranty.
- Protec Micro, 7W Fire Rated Downlights and Serenus are provided with a five year replacement luminaire only warranty.
- Controls systems such as standalone sensors, switches, marshalling boxes and cabling are provided with a one year warranty for both parts and labour. DALI control systems are provided with a two year warranty for both parts and

labour.

- LEDextra ranges including Glide Power, Glide Mini, Glide RGBW, Colour Glide, Glide In Ground, Glide Pixel and AluLED ranges are supplied with a three year parts or replacement luminaire only warranty.
- LEDEX ranges are supplied with a three year replacement luminaire only warranty.

All warranties are subject to correct use of the product and will be invalidated by misuse, for example incorrect installation, unsuitable environmental conditions or incorrect maintenance. It is the duty of the customer to ensure that all the fault lies with the luminaire prior to requesting replacement parts or site repairs. In the event that no defect is found with the product our costs for attending site will be recharged to the customer and credit will not be issued against returned products. No consequential losses incurred resulting from any defect with our product will be reimbursed.

Given the nature of LED technology a small percentage of LEDs may fail during the lifetime of a luminaire, this does not cause a reduction in lumen output. As such LED luminaires are only deemed to be faulty for warranty purposes when in excess of ten percent of LEDs have failed in a single luminaire

On site repair of products under warranty will be undertaken during normal working hours, 9am to 5pm Monday to Friday, and will require unrestricted access to luminaires. Where required Dextra will provide access equipment to carry out repairs at height, should luminaires have been installed in locations where reasonable provision for maintenance access has not been made we reserve the right to supply replacement product only.

If you require any assistance with regards to our products please contact our Customer Services department on 01747 858100.

[DOWNLOAD WARRANTY PDF](#)

## ORDER CODES

### LUMINAIRE

Code	Description	Circuit Wattages	Llm/W
CAP L35	Capo, 2,735lm, Grey Collar, Grey Housing, Colour 84	21.6W	126
CAP L45	Capo, 3,533lm, Grey Collar, Grey Housing, Colour 84	27.7W	127

Supplied with suspension kit

### DIMMING

Code	Description
A	DALI Digital Addressable Lighting Interface
S	Switch Dimming
D	DSI Digital Dimming
H	HFR Analogue 1-10v
C	Bi-Level Dimming For Standalone Switched Sensor

### CONTROL

Code	Description
RLI	Reacta-Link, Wireless Enabled Luminaire
RD	Reacta-Dim, Wireless Dimming / Switching

Please click here for full details on our wireless controls.

**EMERGENCY**

Code	Description
LE3	Lithium Standard Emergency 3 Hour
LS3	Lithium Selftest Emergency 3 Hour
LA3	Lithium Autotest Emergency 3 Hour
LSTR	Lithium Reacta-Link Emergency 3 Hour

Emergency is not available in L45 variants

**MISCELLANEOUS**

Code	Description
C**	Select Colour Temperature and Rendering; C83, C84, C85, C865, C93, C94
WH	White Finish
R	Red Collar
O	Orange Collar
GR	Green Collar
BL	Blue Collar

Collar colours may be subject to minimum order quantity