



PRODUCT SPECIFICATION

3 CIRCUIT TRACK
SURFACE/SUSPENDED



INTRODUCTION

We offer a comprehensive selection of recessed track and accessories, our three circuit offering has been designed for the professional and is renowned for its reliability, durability and quality finish. The extruded aluminium profiles of this 16 amp three circuit system are available in a choice of three colours and are complimented by a wide array of accessories ensuring complete flexibility in track configurations.

- CE
- IP20

APPLICATION

- Accent Lighting
 - Display Lighting
 - Retail
-

SPECIFICATION

CONSTRUCTION

- Extruded aluminium profile with copper core conductors.

INSTALLATION

- Can be surface mounted or suspended.

VARIATIONS

- RAL 9010 White
- RAL 9005 Black
- AW 202JR Grey

IMAGES

PRODUCT IMAGES



White Track



Grey Track



Black Track



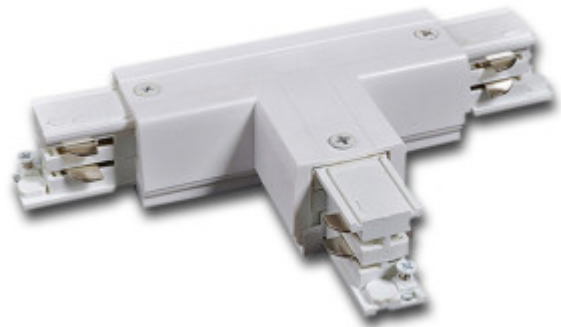
Hi-Track-Tracks_jpg-300x174

3 CIRCUIT TRACK SURFACE/SUSPENDED

PRODUCT SPECIFICATION



Surface mount for single track luminaire



3 circuit 3 way connector right R2



3 circuit 3 way connector right R1



3 circuit 3 way connector left L2



3 circuit flexible track joiner



3 circuit corner right



3 circuit live end right



3 circuit corner left

3 CIRCUIT TRACK SURFACE/SUSPENDED

PRODUCT SPECIFICATION



3 circuit 3 way connector left L1



3 circuit live end left



3 circuit dead end

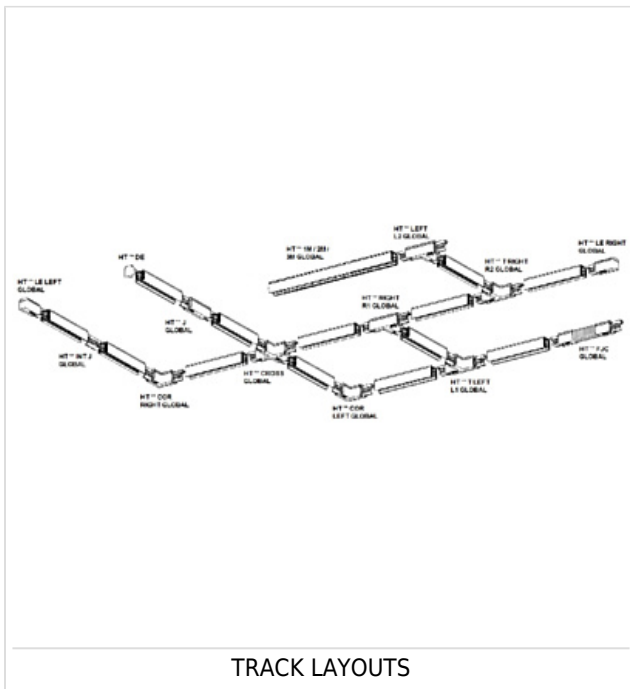


Track Suspension Kit

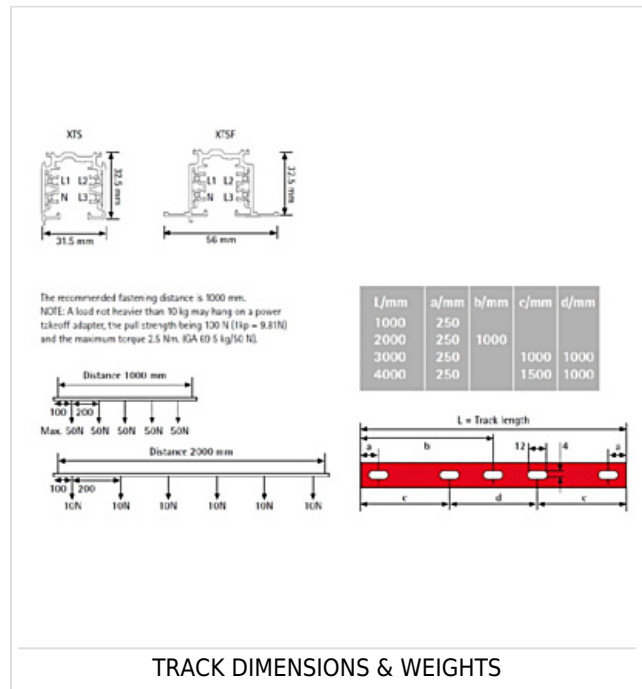


Track Suspension Kit for Exposed T Ceiling

TECHNICAL



TRACK LAYOUTS



TRACK DIMENSIONS & WEIGHTS

WARRANTY

At Dextra our commitment to service has been at the forefront throughout our history spanning more than forty years in the UK lighting market. Our service ethos extends beyond design and delivery, we believe supporting your installation throughout the warranty period is equally crucial, whilst the strength and longevity of Dextra Group provides peace of mind that our warranty will be supported throughout.

The Dextra range is supplied with a five year warranty commencing from the date of delivery. During the first three years defects will be repaired on site and the warranty will include both parts and labour. For the final two years drivers, emergency modules, wireless modules, sensors and LED circuits will be supplied free of charge to replace defective components, labour and other associated costs are not included.

Certain ranges and components are subject to exemptions:

- Lithium batteries are provided with a three year warranty for parts and labour. Nickel Metal Hydride and Nickel Cadmium batteries are provided with a one year warranty for parts and labour.
- Emergency luminaires including AME LED, EX1 LED, EX12 LED, EX1 Track, HBE LED, HBE2 LED, OAT2 LED, OEZ LED and Twinspot with Nickel Metal Hydride batteries are supplied with a one year warranty for parts and labour. Lithium variants of these ranges are supplied with a three year warranty for parts and labour with the exception of the AME2, EX13, HBE3 and TWS IP65 L7 ranges which are supplied with a one year parts and labour warranty.
- Protec Micro, 7W Fire Rated Downlights and Serenus are provided with a five year replacement luminaire only warranty.
- Controls systems such as standalone sensors, switches, marshalling boxes and cabling are provided with a one year warranty for both parts and labour. DALI control systems are provided with a two year warranty for both parts and labour.
- LEDextra ranges including Glide Power, Glide Mini, Glide RGBW, Colour Glide, Glide In Ground, Glide Pixel and AluLED

ranges are supplied with a three year parts or replacement luminaire only warranty.

- LEDEX ranges are supplied with a three year replacement luminaire only warranty.

All warranties are subject to correct use of the product and will be invalidated by misuse, for example incorrect installation, unsuitable environmental conditions or incorrect maintenance. It is the duty of the customer to ensure that all the fault lies with the luminaire prior to requesting replacement parts or site repairs. In the event that no defect is found with the product our costs for attending site will be recharged to the customer and credit will not be issued against returned products. No consequential losses incurred resulting from any defect with our product will be reimbursed.

Given the nature of LED technology a small percentage of LEDs may fail during the lifetime of a luminaire, this does not cause a reduction in lumen output. As such LED luminaires are only deemed to be faulty for warranty purposes when in excess of ten percent of LEDs have failed in a single luminaire

On site repair of products under warranty will be undertaken during normal working hours, 9am to 5pm Monday to Friday, and will require unrestricted access to luminaires. Where required Dextra will provide access equipment to carry out repairs at height, should luminaires have been installed in locations where reasonable provision for maintenance access has not been made we reserve the right to supply replacement product only.

If you require any assistance with regards to our products please contact our Customer Services department on 01747 858100.

[DOWNLOAD WARRANTY PDF](#)

ORDER CODES

LUMINAIRE CODES

| Code | Description |
|-------------------------|---|
| HT ** 1M GLOBAL | 1m Length 3 Circuit Track Global |
| HT ** 2M GLOBAL | 2m Length 3 Circuit Track Global |
| HT ** 3M GLOBAL | 3m Length 3 Circuit Track Global |
| HT ** J GLOBAL | 3 Circuit Straight Track Joiner Global |
| HT ** INT J GLOBAL | 3 Circuit Internal Track Joiner Global |
| HT ** FJC GLOBAL | 3 Circuit Flexible Track Joiner Global |
| HT ** DE GLOBAL | 3 Circuit Dead End Global |
| HT ** LE LEFT GLOBAL | 3 Circuit Live End Left Global |
| HT ** LE RIGHT GLOBAL | 3 Circuit Live End Right Global |
| HT ** T LEFT L1 GLOBAL | 3 Circuit 3 Way Connector Left L1 Global |
| HT ** T LEFT L2 GLOBAL | 3 Circuit 3 Way Connector Left L2 Global |
| HT ** T RIGHT R1 GLOBAL | 3 Circuit 3 Way Connector Right R1 Global |
| HT ** T RIGHT R2 GLOBAL | 3 Circuit 3 Way Connector Right R2 Global |
| HT ** COR LEFT GLOBAL | 3 Circuit Corner Left Global |
| HT ** COR RIGHT GLOBAL | 3 Circuit Corner Right Global |
| HT ** CROSS GLOBAL | 3 Circuit 4 Way Connector Global |
| HT ** SC | Suspension Clamp |
| HT**FIX-POINT GLOBAL | 3 Circuit Circular Fixing Point Box |
| HT ** 3M Suspension | 3m Suspension Kit for Solid Ceiling |
| HT ** 5M Suspension | 5m Suspension Kit for Solid Ceiling |
| HT ** 10M Suspension | 10m Suspension Kit for Solid Ceiling |

3 CIRCUIT TRACK SURFACE/SUSPENDED

PRODUCT SPECIFICATION

| | |
|----------------------|------------------------------|
| HT ** 3M SUSP GPLKIT | 3m Suspension Kit for Purlin |
|----------------------|------------------------------|

| | |
|----------------------|------------------------------|
| HT ** 5M SUSP GPLKIT | 5m Suspension Kit for Purlin |
|----------------------|------------------------------|

| | |
|-----------------------|-------------------------------|
| HT ** 10M SUSP GPLKIT | 10m Suspension Kit for Purlin |
|-----------------------|-------------------------------|

**Insert BL for RAL 9005 Black, GY for AW 202JR Grey or leave blank for RAL 9010 White.

MISCELLANEOUS

| Code | Description |
|------|-------------|
|------|-------------|

| | |
|-----------------|--|
| HT BENDING TOOL | Bending Tool for Cutting Track to Length |
|-----------------|--|